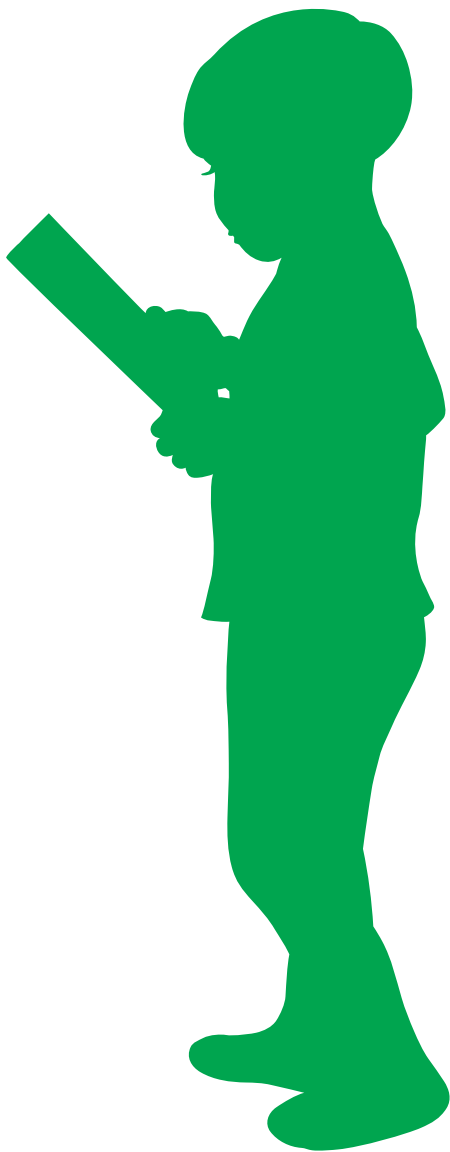


THE SEVEN QUALITY AREAS COVERED BY THE NATIONAL QUALITY STANDARD

Some types of services are assessed and rated by the government against the National Quality Standard. This gives you consistent and dependable information to help you make the best choice for you and your child.

WHAT SERVICES ARE INCLUDED? **LONG DAY CARE** **FAMILY DAY CARE** **PRESCHOOL/KINDERGARTEN** **OUTSIDE SCHOOL HOURS CARE**



WHAT ARE THE QUALITY AREAS ASSESSED AND RATED IN THE NATIONAL QUALITY STANDARD?

1. EDUCATIONAL PROGRAM AND PRACTICE
Your child is supported to participate in play and learning
2. CHILDREN'S HEALTH AND SAFETY
Your child is protected from illness and hazards
3. PHYSICAL ENVIRONMENT
Your child plays in a safe and well maintained environment
4. STAFFING ARRANGEMENTS
There are enough qualified staff to give your child the attention they need
5. RELATIONSHIPS WITH CHILDREN
Your child is made to feel supported and welcomed
6. COLLABORATIVE PARTNERSHIPS WITH FAMILIES AND COMMUNITIES
Local community involvement and respect and inclusion of all beliefs and values
7. LEADERSHIP AND SERVICE MANAGEMENT
Your child is cared for in a positive and well managed environment

HOW ARE SERVICES RATED?

A service will be given a rating for each of the seven quality areas and the overwhelming majority of services will receive one of these ratings:

1. Working towards
2. Meeting
3. Exceeding

Where can I find my nearest service and its rating?

www.startingblocks.gov.au
